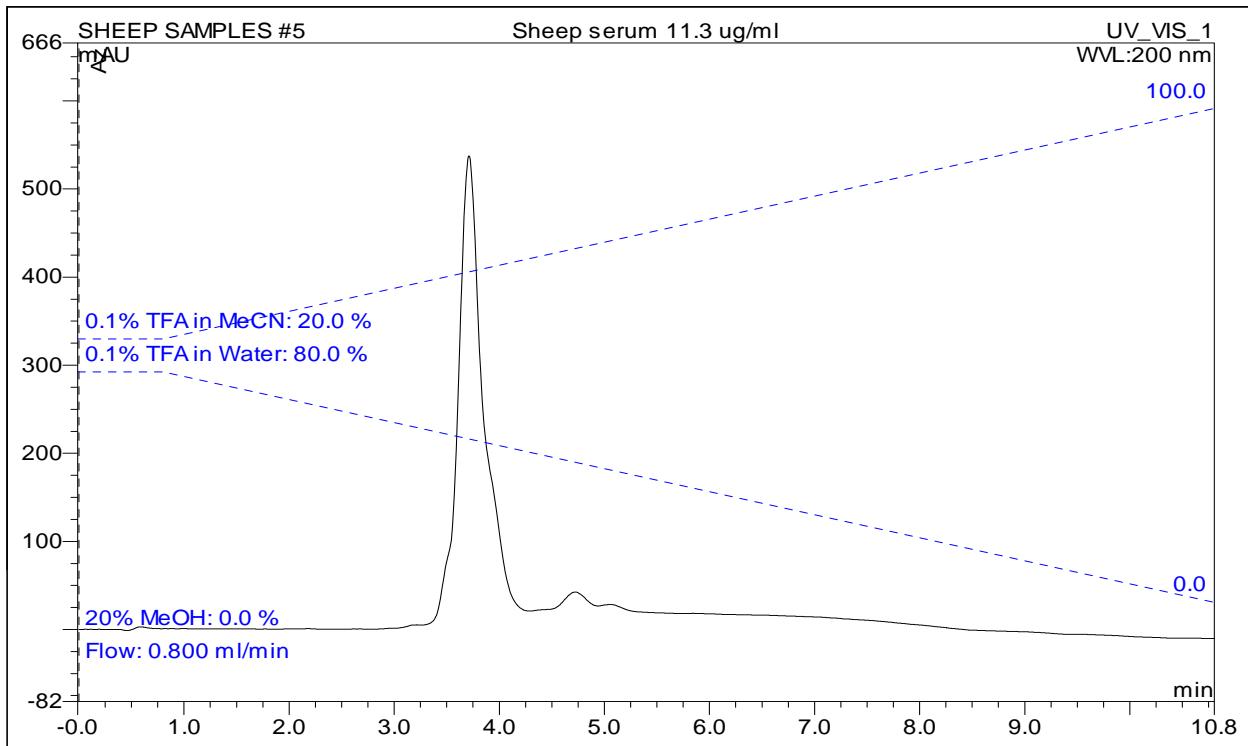


Application Note #0002

Sheep Serum - Reverse Phase

| | | | |
|----------------------------|----------------|--------------------------|-------------------|
| Column: | FM-PhEs | Elution Type: | Gradient |
| Dimensions: | 100 x 3.2mm ID | Eluent A: | 0.1% TFA in Water |
| Order No.: | | Eluent B: | 0.1% TFA in MeCN |
| Detection: | 200 nm | | |
| Flow Rate (mL/min): | 0.800 | Gradient Profile: | |
| Injection Volume: | 10ul | Step Number | Time (min) |
| Column Temperature: | 35.0 | 1 | 0 |
| Sample Loop Volume: | 100uL | 2 | 0.8 |
| | | 3 | 10.8 |
| | | | %A |
| | | | %B |
| | | | 80 |
| | | | 20 |
| | | | 80 |
| | | | 20 |
| | | | 0 |
| | | | 100 |



ANALYTES:

| No. | Peak Name | Sample Conc. |
|-----|-------------|--------------|
| 1 | Sheep serum | 11.3ug/ml |