

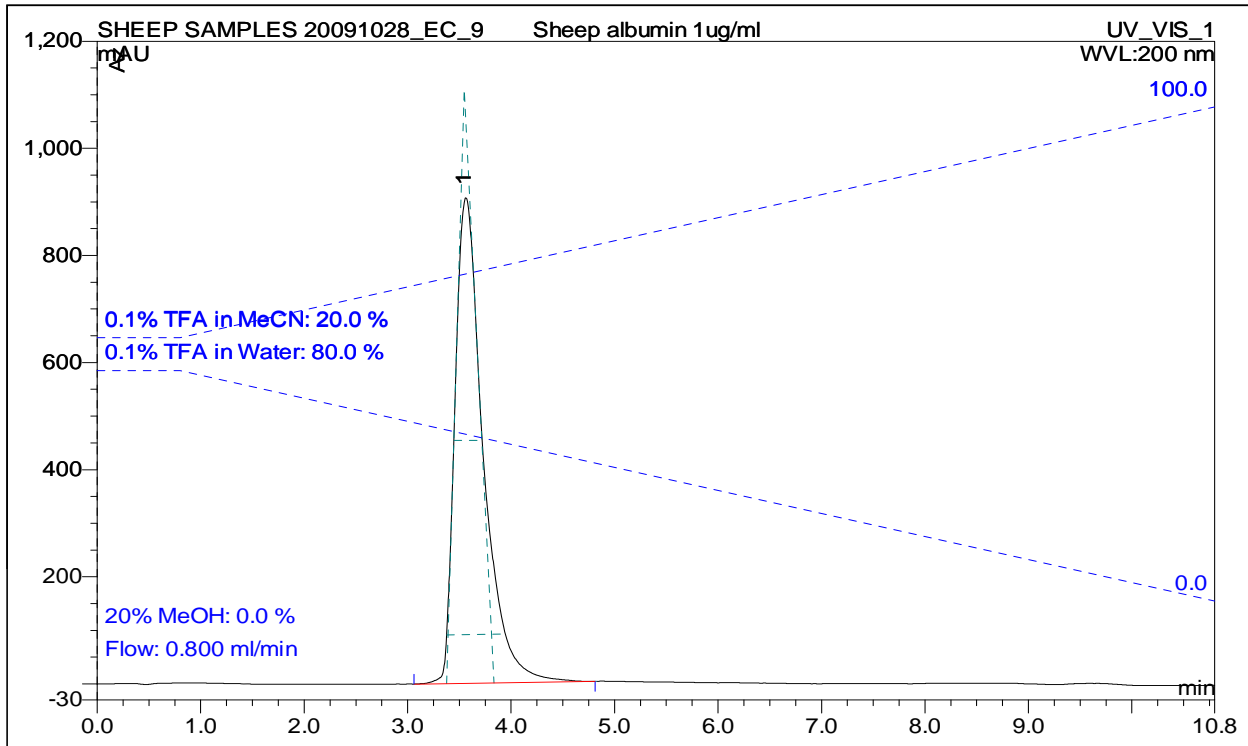
Application Note #0003

Sheep Albumin - Reverse Phase

Column: FM-PhEs
Dimensions: 100 x 3.2mm ID
Order No.:
Detection: 200 nm
Flow Rate (mL/min): 0.800
Injection Volume: 10uL
Column Temperature: 35.0
Sample Loop Volume: 100uL

Elution Type: Gradient
Eluent A: 0.1% TFA in Water
Eluent B: 0.1% TFA in MeCN

Gradient Profile:	Step Number	Time (min)	%A	%B
	1	0	80	20
	2	0.8	80	20
	3	10.8	0	100



ANALYTES:

No.	Peak Name	Sample Conc.
1	Sheep Albumin	1 ug/ml